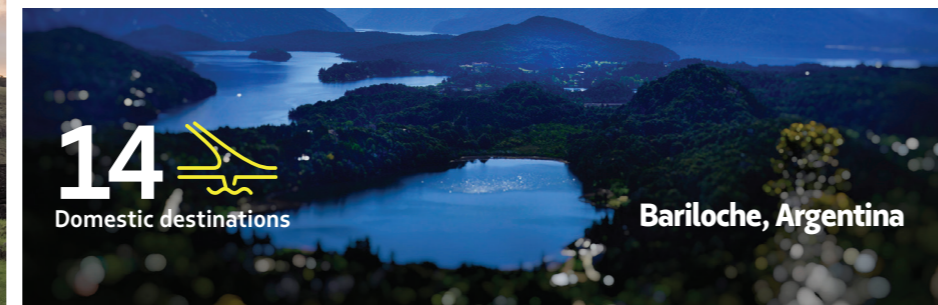


Committed to safety and customer satisfaction
LATAM Airlines Group has a young fleet of 306 aircraft that include some of the newest models on the market. The company has recently restructured its fleet through the incorporation of new technologies and larger aircraft, such as the Boeing 787, Airbus A350 and Airbus A320 and A321neo.



New uniforms to be worn by
over 23,000 cabin crew

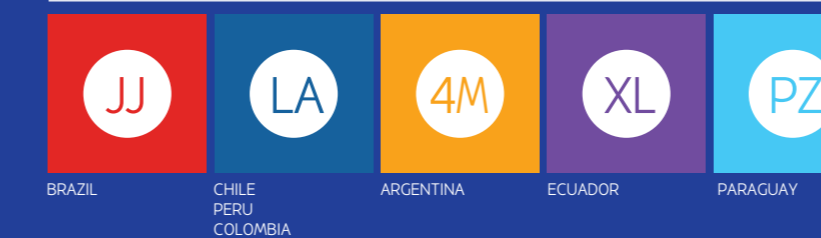


LATAM Airlines Group at your service:

Department	Phone	Email / Web
Corporate Sales Support*	(877) 775-5526	CorporateSalesSupport@latam.com
Groups*	(800) 526-4246	GroupSales@latam.com Series@latam.com(group series)
Passenger General Reservations	(866) 435-9526	LATAM.com

*When calling, please enter only the first 7 digits of your IATA number.

BOOKING CODES





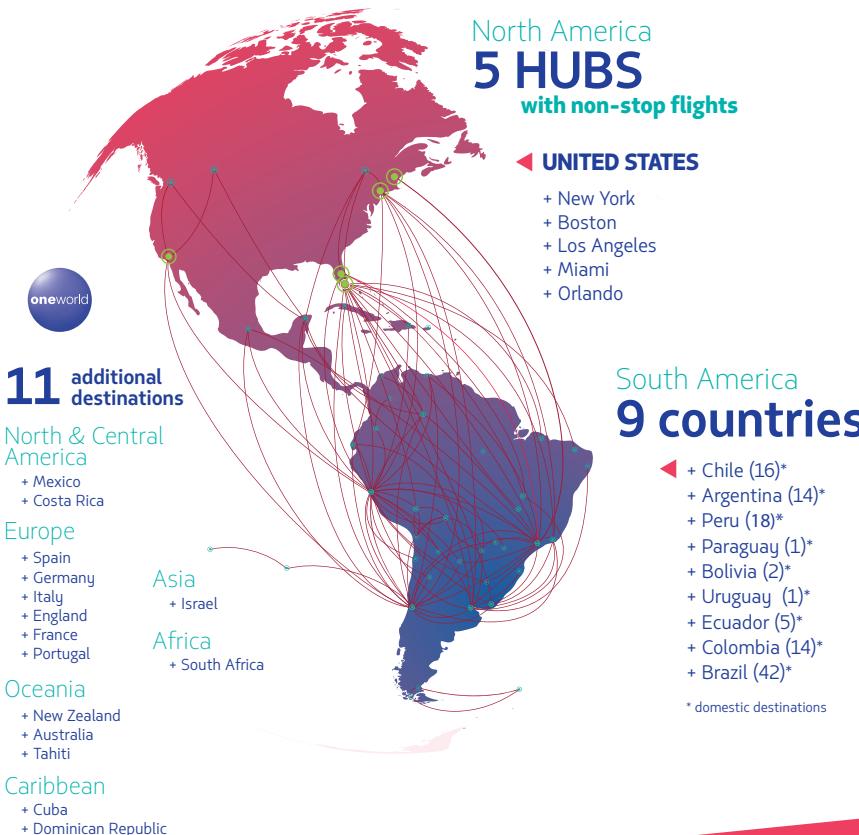
43,000
employees

67MM
passengers per year

302
modern aircrafts

140
destinations

1,300
daily flights



LATAM AIRLINES NEWS

In August of 2015, LATAM Airlines Group announced that LAN and TAM would adopt a single name and identity: LATAM Airlines, to become the largest airline group in South America.

For the fourth consecutive year, LATAM Airlines Group is the leading airline in the Americas on the Dow Jones Sustainability "World" Index, as responsible investment reaches new heights.

Earn and redeem qualifying miles with LATAM Pass, LATAM Fidelidade, or any other **oneworld** members' frequent flyer programs.

On July 2nd, 2018, LATAM Airlines will start four-weekly, non-stop flights from Boston to São Paulo, Brazil, with continuing service to other destinations within Brazil and other South American countries.

LATAM Airlines is the proud winner of these 2017 Awards: **Best Airline in South America** by Skytrax (nine years in a row), **South America's Leading Airline** by World Travel Awards (two years in a row), **Best Airline to South America** by GT Tested Reader Survey Awards (four years in a row) and **Favorite Airline in South America** by GT Trazees (four years in a row).



Our Fleet

Boeing 787-9 / 787-8
Number in Service **24**

Boeing 767
Number in Service **35**

Boeing 777
Number in Service **8**

Airbus A320-Neo
Number in Service **7**

Airbus 350
Number in Service **9**

Airbus 319
Number in Service **46**

Airbus 320
Number in Service **129**

Total Fleet
*At year end 2018 **302***



An outstanding flight experience

You'll feel the difference from the moment you board your flight. From the first welcoming smile, you will start enjoying everything that follows: our award-winning service, international gourmet cuisine with a sommelier-inspired wine list, state-of-the-art entertainment, and a restful night in our comfortable 180° Full-flat seats.

PREMIUM BUSINESS CLASS



180-degree, Full-flat Seats
Seat pitch: 74 in. Seat width: 23 in.

Individual entertainment systems; 15.4 in. screens



180-degree, Full-flat Seats
Seat pitch: 75 in. Seat width: 23 in.

Five-course menu and a sommelier-inspired wine list



180-degree, Full-flat Seats
Seat pitch: 74 in. Seat width: 25 in.

Complimentary amenity Kit: LAN/Salvatore Ferragamo, TAM/Rituals



Top flight experience in its class

Our Economy class, which features updated upholstery, more entertainment options, and friendly service, surprises passengers with a flight experience to remember. Ergonomic, reclining seats with adjustable headrests are designed for maximum comfort. Our experienced flight crew provides the same high level of service and attention in every cabin.

ECONOMY CLASS



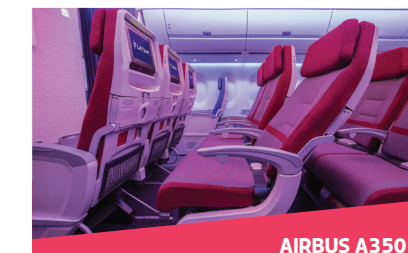
Ergonomic Seat - Recline: 5 In.
Seat pitch: 31 in. Seat width: 18.5 in.

Individual, on-demand entertainment; 9 in. screens



Ergonomic Seat - Recline: 5 In.
Seat pitch: 31 in. Seat width: 17.3 in.

Complimentary drinks and wine, selected by our master sommelier



Ergonomic Seat - Recline: 5 In.
Seat pitch: 31 in. Seat width: 18 in.